



Community Action for a Renewed Environment

Anne E. Keller, Ph.D.

USEPA

Region 4, Atlanta, GA



What is CARE?

CARE is a **community-based,**
community-driven
program created to build
partnerships to help communities
understand and reduce risks from all
sources of toxics.

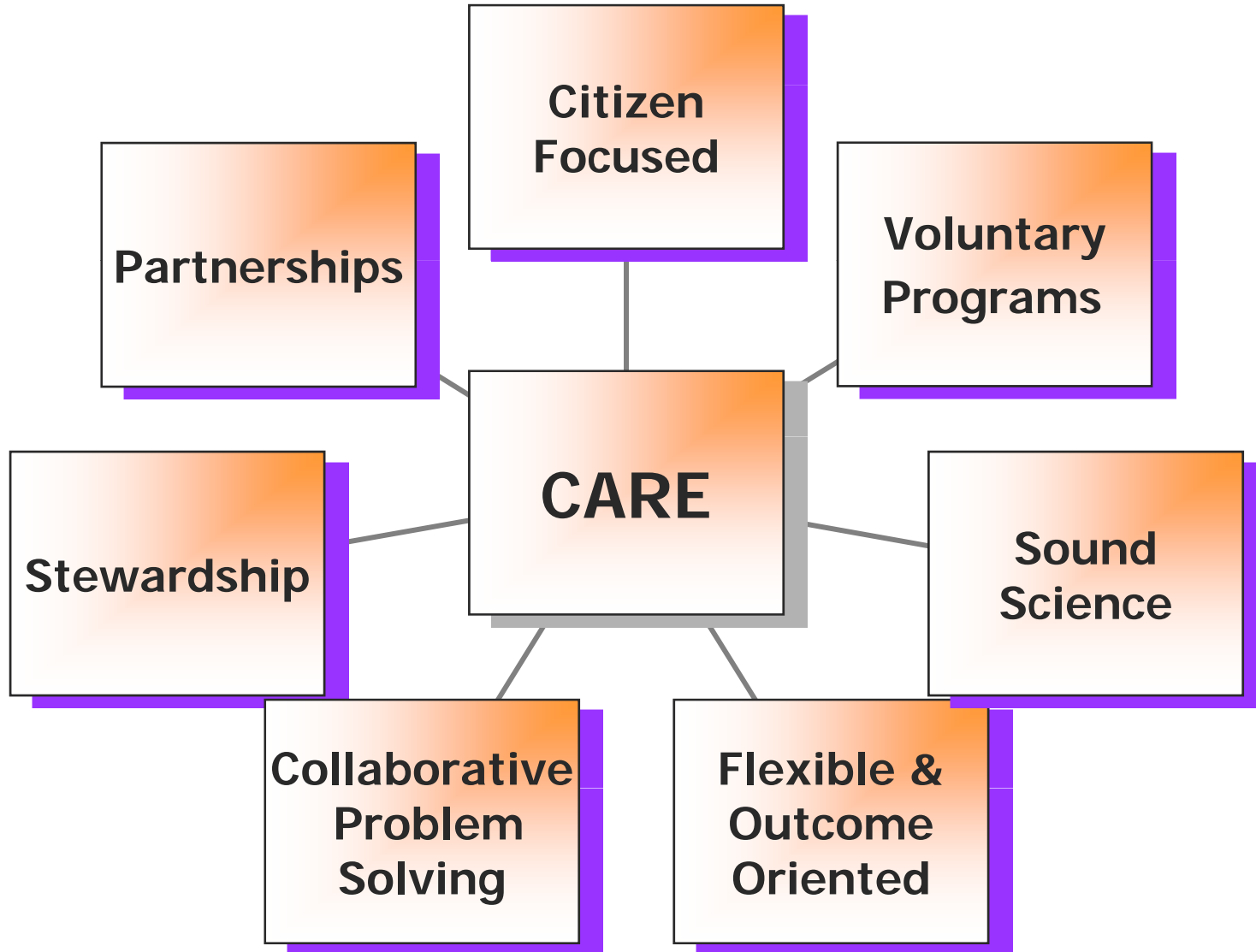


[CARE Goals]

- Reduce exposures to toxic pollutants through collaborative action at the local level
- Help communities gain an understanding of all potential sources of exposure to toxic pollutants
- Work with communities to set priorities for risk reduction activities
- Create self-sustaining, community based partnerships that will continue to improve the local environment



CARE Fits with Agency Priorities



[How CARE Works]

- CARE --proposal-based funding process
- Seeks to address environmental issues that communities have identified
- Focuses on voluntary programs and alternative approaches that extend beyond regulatory requirements
- Projects have focused on low income neighborhoods, county-wide projects, recent/historical concerns, collaborations and addressing environmental impacts directly.

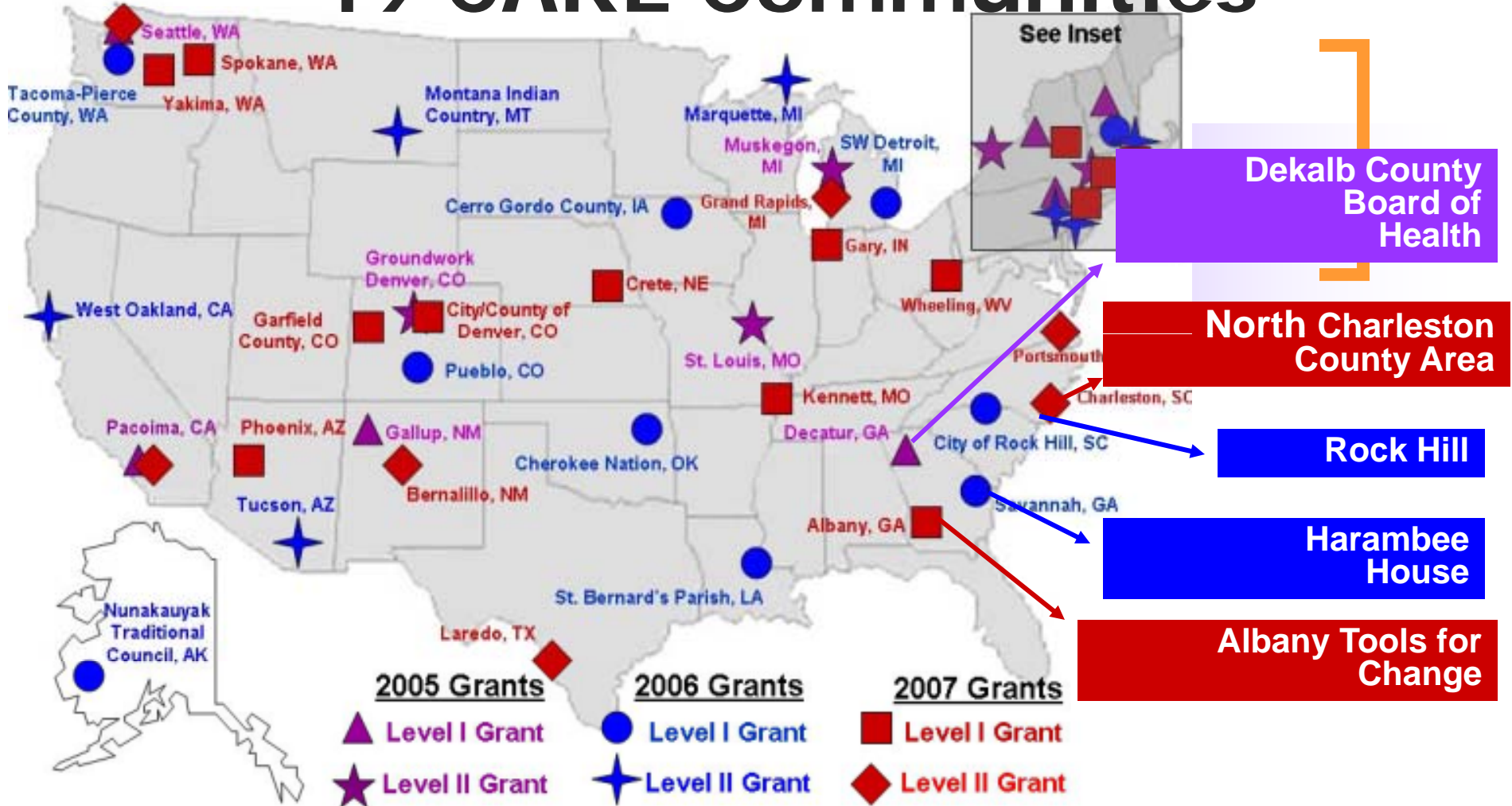


[Annual CARE Proposal Cycle]

- Each year, funds are provided for projects ranging from a maximum of \$100K for Level 1 projects to \$300K for Level 2 projects
- Total for all projects is ~ \$12M to date
- An RFP is published in federal register February describing the application process and areas of interest
- Projects are reviewed by Regional Offices and three to five are selected to compete with other projects nationally



49 CARE Communities



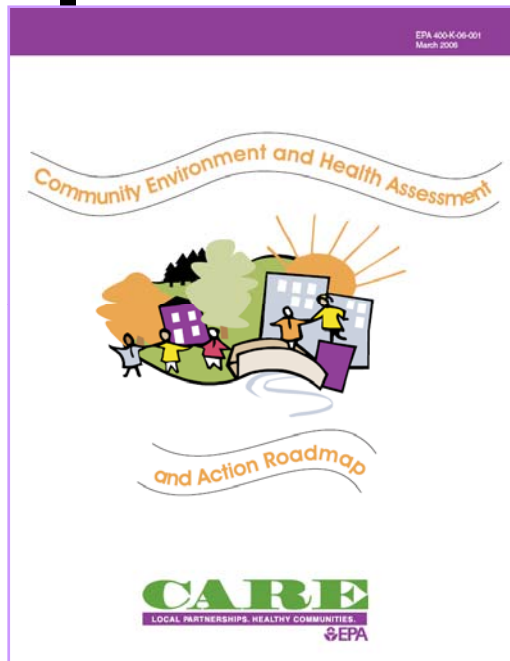
[CARE is More than Money]

EPA works directly with communities to provide:

- Technical support and information
- Scientific expertise and assessment
- Community planning to help identify and reduce risks
- EPA partnership programs
- Networking opportunities
- Shared Learning



CARE Tools for Communities



The Roadmap

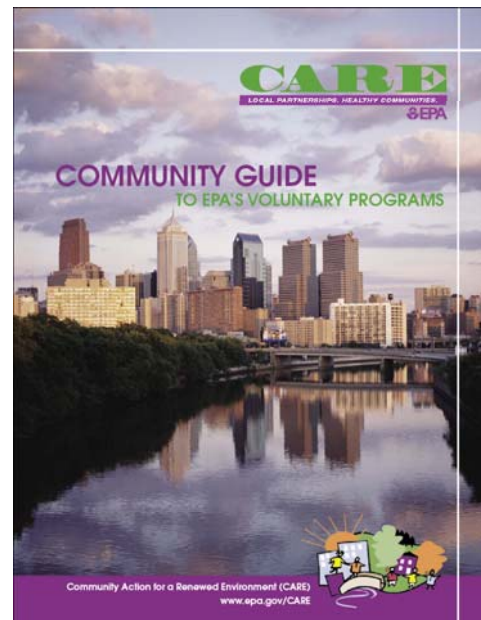
(expected soon)

A method for communities to assess local risks



Community Guide to EPA's Voluntary Programs

A guide of EPA voluntary programs of greatest benefit to communities



The CARE Resource Guide

A comprehensive map of EPA's on-line resources for communities

All available at:

www.epa.gov/CARE

How CARE Can Contribute to Air Quality Improvements

- Provides information about voluntary programs
- Education, outreach
- Funding for data collection, monitoring
- Potential equipment testing
- Pilot projects



Examples of Activities for Level 1 Projects

Level 1 Projects focus on developing community groups and building consensus about issues:

- convene, facilitate, and provide information to community stakeholder group(s);
- investigate environmental problems within different media and prepare educational materials regarding the results of the investigations;
- analyze their relative risks and potential solutions;
- evaluate and track progress, and communicate lessons learned with other communities.



Level 2 Projects Focus on Restoration or Risk-Amelioration

- Perform environmental sampling
- Evaluate data and sampling results
- Develop a remediation plan
- Implement the plan through education, on-the-ground clean-ups or other approaches
- Benefit greatly from matching funds



Boston Public Health Commission CARE Project Level 2

- Boston Public Health-- more than 700 legal and illegal auto shops are clustered in diverse, low-income neighborhoods and are a source of multimedia hazards to air, groundwater and soil.
- Goal- to measurably reduce the negative environmental and public health impacts by auto shops by decreasing emissions of hazardous materials and improving work practices
 - 150 automobile shop assessments
 - 600 worker surveys
 - 40 in-shop trainings reaching over 400 workers and owners on pollution prevention and worker protection
 - 16 community health screening events, 18 train-the trainer sessions on environment and public health risks, and four major community outreach events to raise public awareness for thousands of residents



Earth Keepers CARE Project

Marquette, MI

- The Earth Keepers CARE project focuses on reducing following environmental toxins: pharmaceuticals, household hazardous waste, e-waste, mercury and toxins from household burn barrels.
- The Central Lake Superior Watershed Partnership
- Develop or adopt related community education and outreach materials about pharmaceuticals, household hazardous waste, e-waste, mercury and toxins from household burn barrels.
- EPA staff will provide technical assistance for development of draft community ordinances to address these issues/achieve pollution reduction goals
- Working with nine faith communities (in the greater Marquette area and over 120 congregations throughout the Upper Peninsula of Michigan) and local governments, Northern Michigan University and Keweenaw Bay Indian Community



[Region 4 Funded CARE Projects]

- 2005 – Dekalb Co, GA (Level I)
- 2006 - Rock Hill, SC (Level I)
- 2006 – Savannah, GA (Level I)
- 2007 – Albany, GA (Level I)
- 2007 – Charleston County, SC (Level II)



2005 – DeKalb County Board of Health DeKalb County, Georgia



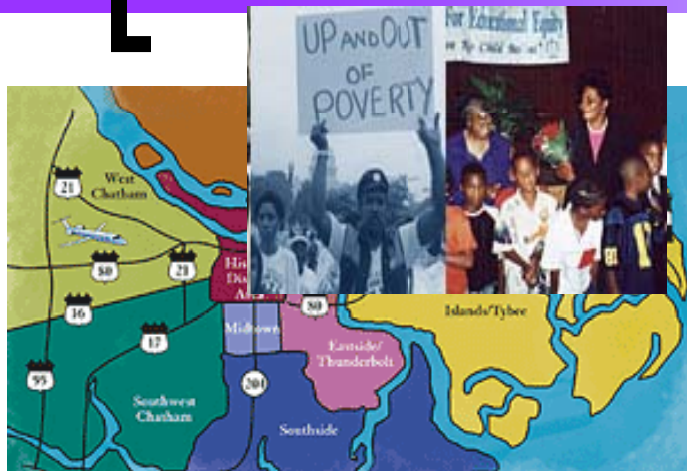
- Two neighborhoods in the City of Clarkston
- One focused on external environment
- Second with internal air quality issues
- Will complete project in March 2008, with prioritization and identification of next steps

Project Highlights

- Completed prioritization in Clarkston and environmental concerns
 - industry putting harmful chemicals or smoke into air
 - automobile fluids leaking into groundwater,
 - transportation causing poor air quality
 - and industry runoff spilling into groundwater or lake
- Ahead of target date for completing prioritization in Brannon Hills Community



2006 - Harambee House Savannah, GA



- Develop community group in neighborhoods near port
- Increase understanding of toxic risks in two neighborhoods 90% African-American and 14% below poverty line
- Prioritize potential concerns

Project Highlights

- Project work began in January 2007
- Developed community group and began to discuss concerns/issues
- Charette planned for November 10th
- Community Meetings to involve multiple stakeholders, including industry and small business owners



2006—City of Rock Hill, SC



- Create a self-sustaining, community-based partnership to improve local environment
- Potential environmental issues— asbestos, lead-based paint, dyeing and finishing chemicals, and other hazardous materials from old textile mills, industrial activities
- Old infrastructure for water, homes with asbestos and lead based paints

2007 Project Highlights

- Established Urban Task Force—university, medical center, city government, representatives of five neighborhoods
- Community Focus Group meetings to introduce project goals
- Began prioritizing activities, testing
- Hired contractor to sample neighborhood



2007 – Tools for Change Albany, Georgia



- Protect community air and water
- Address toxic pollutants that may be released into the air, land and water
- Educate community about health effects pollutants may have on children and long-term residents

Project Highlights

- Two petroleum storage tank farms housed in community
- Elementary school adjacent to multiple former industrial waste sites
- Pollutants seeping into soils and water table
- Emissions and spills from storage facilities and hauling company
- Mechanic shop and dry cleaners practices
- Protection of shallow Ocala Aquifer



2007 – Charleston County Charleston, SC



- **Protect community air and water**
- **Reduce non-point source water pollution**
- **Examine previously documented toxic exposures & suspected toxic sources**
- **Educate community about the health effects of pollutants and protection options**

Project's Highlights

- Focused training and educational campaign about air and water pollution sources and steps citizens may take to reduce pollution
- Complement existing programs addressing environmental pollution (ozone early action compact, green space acquisition, mass transit programs)
- Training and outreach about stormwater to reduce non-point source water pollution from pet wastes.
- May include installation of diesel retrofits on government diesel vehicles



Future of CARE Program

- Community projects are of great interest to EPA
- Expect to continue CARE and other programs in the future
- HQ is interested in continuing the Program to augment our regulatory role, bringing communities to the table to collaborate with us



Timeline and Next Steps—Competing for CARE Funding

- RFP for 2008 Project selection in preparation; to be published in February 2008
- RFP will be on grants.gov
- Funding ranges from max of \$150K for level 1 to \$300K for level 2
- Selection of new projects will begin in May
- Non-profits, universities, city/county agencies
- Focus is on environmental benefits
- Looking for measurable results related to EPA strategic plan, environmental and public health improvements

